



AP45E and 10MPC Antenna Installation Guide



INSTALLATION GUIDE (10MPC Antenna)

Contents

Overview	2
Tools Required	2
AP Overview	3
MPC Overview.....	4
Antenna Product Line Overview.....	5
Antenna Installation	6
Step 1	7
Step 2	7
Step 3	7
Step 4	7
Step 5	8
Step 6	8

Overview

This document will go through the required process to properly install an AccelTex 10MPC antenna on a Juniper-Mist AP45E access point. Following these steps will allow for the use of 6GHz under LPI rules in approved countries and regions.

Terms:

- **AP45E:** Shorthand for [Juniper-Mist AP45E](#)
- **10MPC:** The specialized connectors utilized by the AP45E and compatible AccelTex antennas. The multi-port connectors (MPC) are split between two different units: one consisting of 4 ports for use by the 2.4/5GHz radio and one consisting of 6 ports for use by the tri-band scanning and 6GHz radios.
- **10MPC Antenna:** Any AccelTex antenna that is terminated with the specialized MPC connectors.
- **LPI:** [Low power indoor](#) FCC Regulation for 6GHz use

Tools Required

Size 9 Security Torx Bit or Screwdriver
(Referred to as Torx bit in this document)



AP Overview



Figure 1: AP45E Front

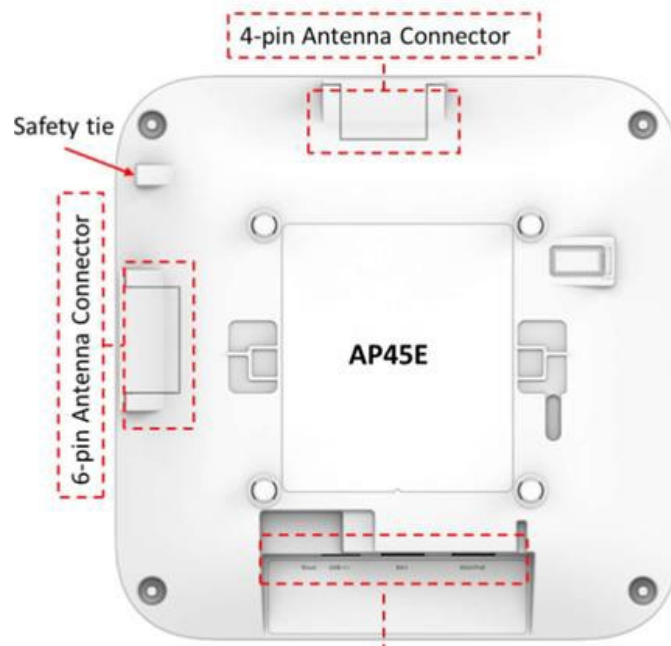


Figure 2: AP45E Back



MPC Overview

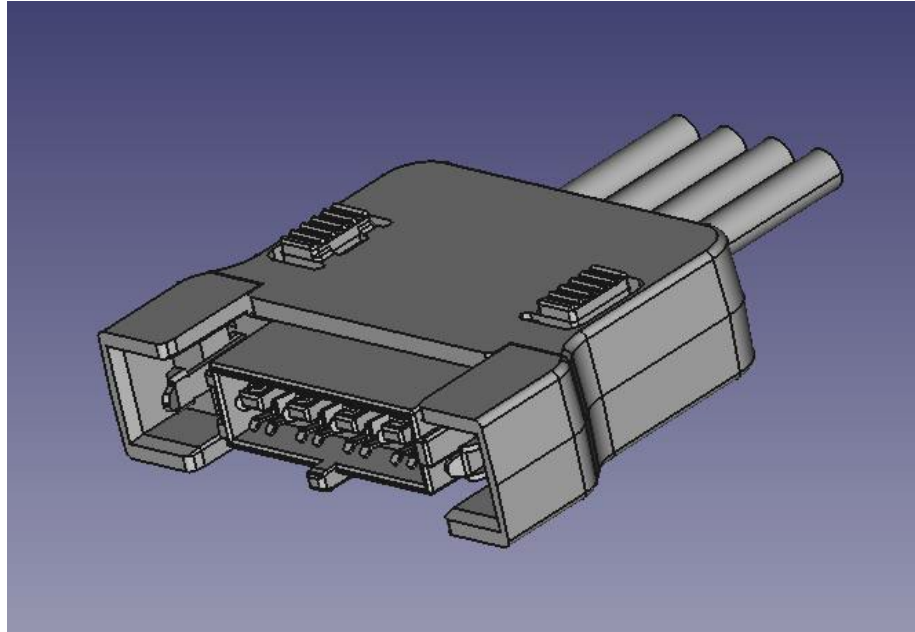


Figure 3: 4MPC

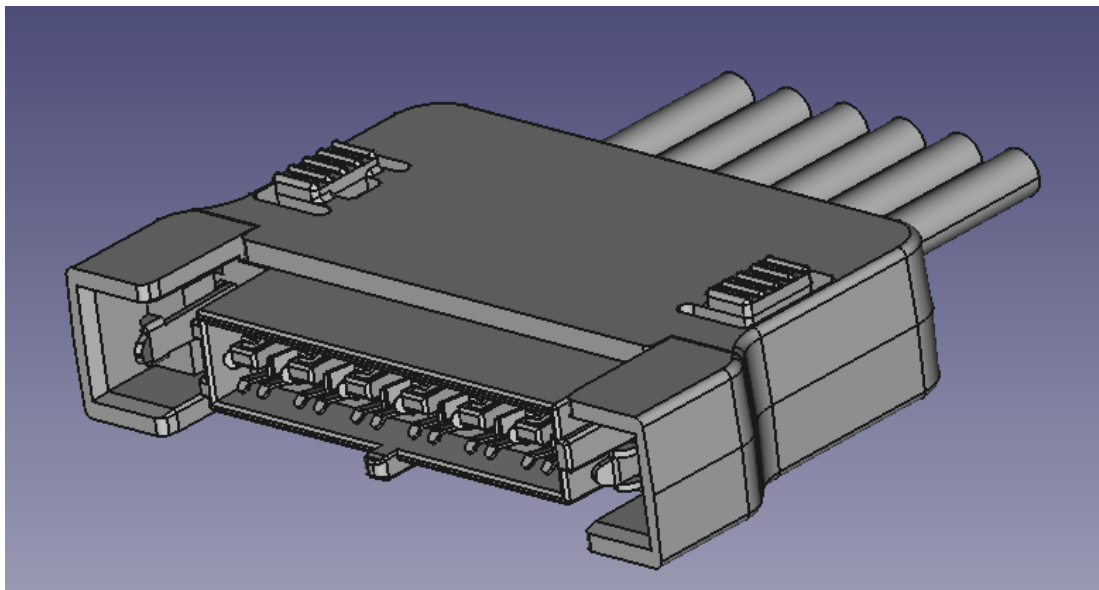


Figure 4: 6MPC



10MPC Antenna Installation Guide

Antenna Product Line Overview

ATS-OP-2456-477-10MPC-36



2.4/5/6 GHz 4/7/7 dBi 10
Element Indoor Patch Antenna
with 10 MPC

ATS-OP-2456-7-10MPC-36



2.4/5/6 GHz 7 dBi 10 Element
Indoor Patch Antenna with 10
MPC

ATS-OP-2456-8-10MPC-36



2.4/5/6 GHz 8 dBi 10 Element
Indoor Patch Antenna with 10
MPC

ATS-OP-2456-81010-10MPC-36



2.4/5/6 GHz 8/10/10 dBi 10
Element Indoor Patch Antenna
with 10 MPC

ATS-OP-2456-5-10MPC-36



2.4/5/6 GHz 90°x90° 5 dBi 10
Element Indoor Patch Antenna
with 10 MPC

ATS-OO-2456-466-10MPC-36



2.4/5/6 GHz 4/6/6 dBi 10
Element Indoor Omni Antenna
with 10 MPC

Figure 5: AccelTex AP45E Antenna Offering



Antenna Installation

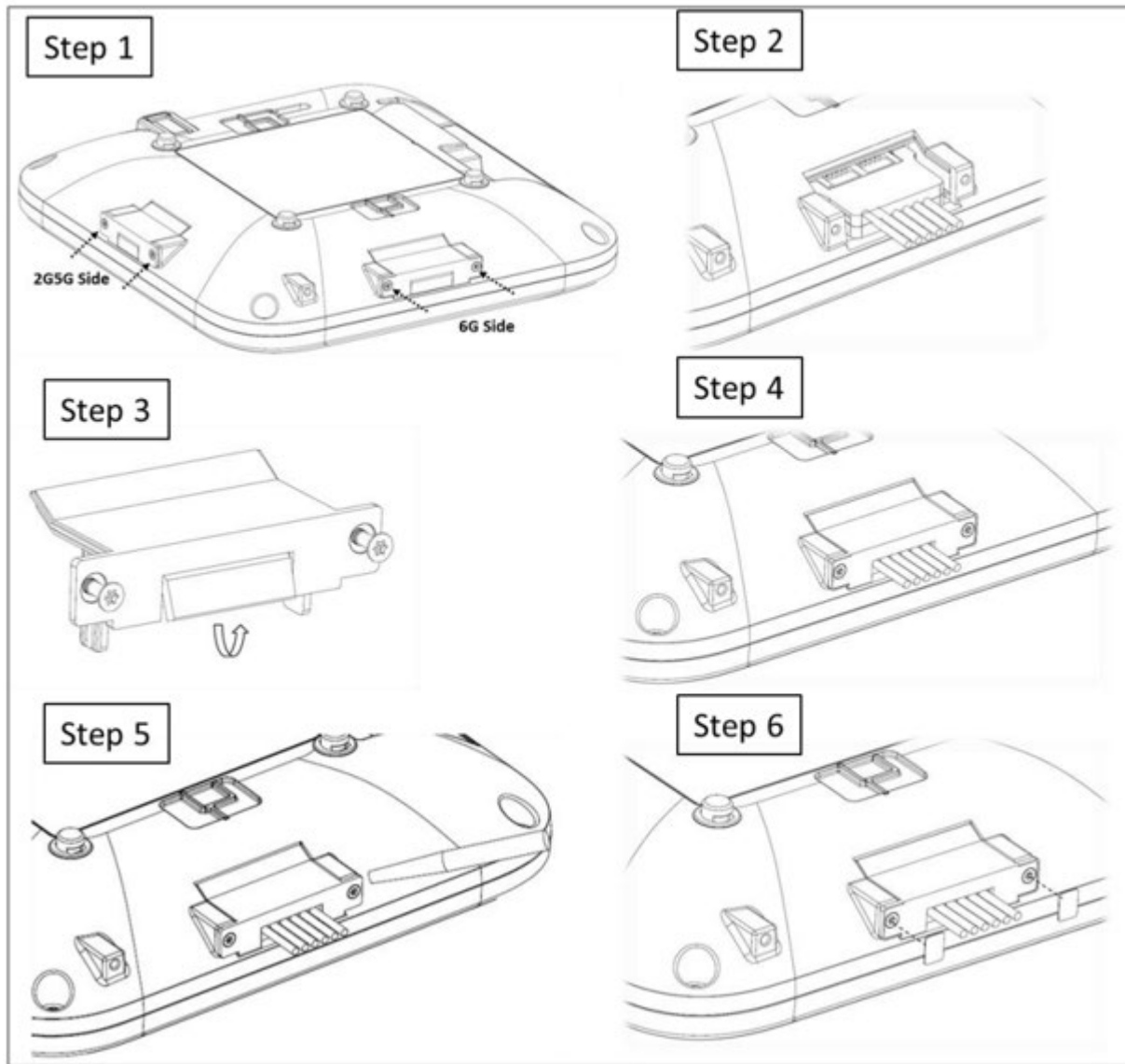


Figure 6: MPC Installation Overview



10MPC Antenna Installation Guide

Step 1

1. Acquire your AP45E and flip AP over so the back of the AP is accessible.
2. Using Torx bit, remove the four security screws used to secure the covers over the 4-port and 6-port antenna connections on the AP45E.

Step 2

1. Take the 4MPC from the antenna and insert into the AP45E 4-port antenna connector with the words “Face Out” visible on the 4MPC. Push until an audible click is heard.
2. Take the 6MPC from the antenna and insert into the AP45E 6-port antenna connector with the words “Face Out” visible on the 6MPC. Push until an audible click is heard.

Step 3

Remove the bendable tab from the 4-port and 6-port antenna connection covers.

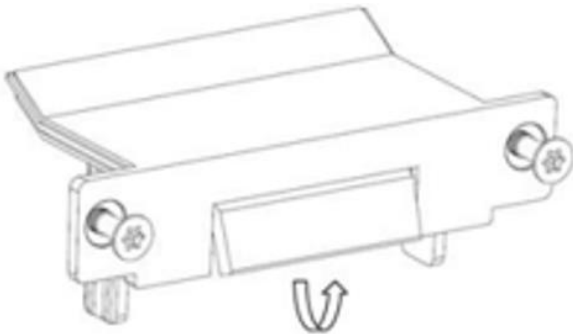


Figure 7: Antenna Connection Cover

Step 4

1. With the 4MPC antenna-AP connection secure, place the antenna connection cover back over the 4-port MPC with the cabling passing through the space created from removing the bendable tab in the previous step.
2. With the 6MPC antenna-AP connection secure, place the antenna connection cover back over the 6-port MPC with the cabling passing through the space created from removing the bendable tab in the previous step.
3. Using the Torx bit, tighten down all four security screws back into the AP at 10in-lbs.



10MPC Antenna Installation Guide

Step 5

Using the included glue, place a drop onto the head of all four security screws.

Step 6

Take the cover tabs and press firmly over the security screwheads to ensure good contact with the glue.

Your AccelTex 10MPC antenna is now properly installed and integrated into the Juniper-Mist AP45E. You can now deploy your AP and utilize all available spectrums approved in your country or region under LPI.

**Please contact your local Juniper-Mist rep for the latest list of approved countries.*



10MPC Antenna Installation Guide

Additional Help and Support

For additional help and support, please contact us:

Phone: 1.888.406.8906

Email: info@acceltex.com